




EJ LEADERS ROUNDTABLE

December 5, 2024





WELCOME

LEAN

LOUISIANA ENVIRONMENTAL
ACTION NETWORK

LA COMMUNITY AIR MONITORING NETWORK BRIEF

EPA Region 6 EJ Leaders Roundtable on Thursday, December 5, 2024

10 a.m. – 12 p.m. CST.

Zoom Link: <https://www.zoomgov.com/j/1617274970>

Presenter: Marylee Orr, Executive Director, LEAN

The LOUISIANA ENVIRONMENTAL ACTION NETWORK(LEAN) is a community based not-for-profit organization that has been working since 1986 to resolve the unique environmental struggles present in Louisiana.



LEAN'S DECADES OF WORK HAVE BUILT A NETWORK OF RESIDENTS AND COMMUNITY ORGANIZATIONS THAT WORK COLLABORATIVELY TO RESOLVE ISSUES, WITH A LONG HISTORY OF ADDRESSING AIR QUALITY CONCERNS.

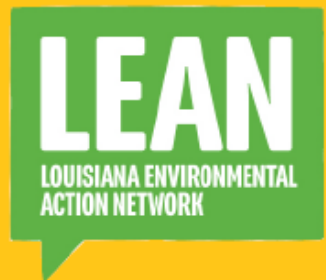
AIR QUALITY CONCERNS HAVE BEEN THE MOST PREVALENT AND LONG STANDING ISSUE RESIDENTS HAVE SOUGHT SUPPORT FROM LEAN FOR OVER THE PAST 37 YEARS. LEAN HAS EMPLOYED MANY DIFFERENT STRATEGIES IN WORKING TO IMPROVE AIR QUALITY IN LOUISIANA. THE DEVELOPMENT OF LEAN'S LOUISIANA COMMUNITY AIR MONITORING NETWORK IS THE LATEST EFFORT TO ADDRESS AIR QUALITY CONCERNS IN LOUISIANA.



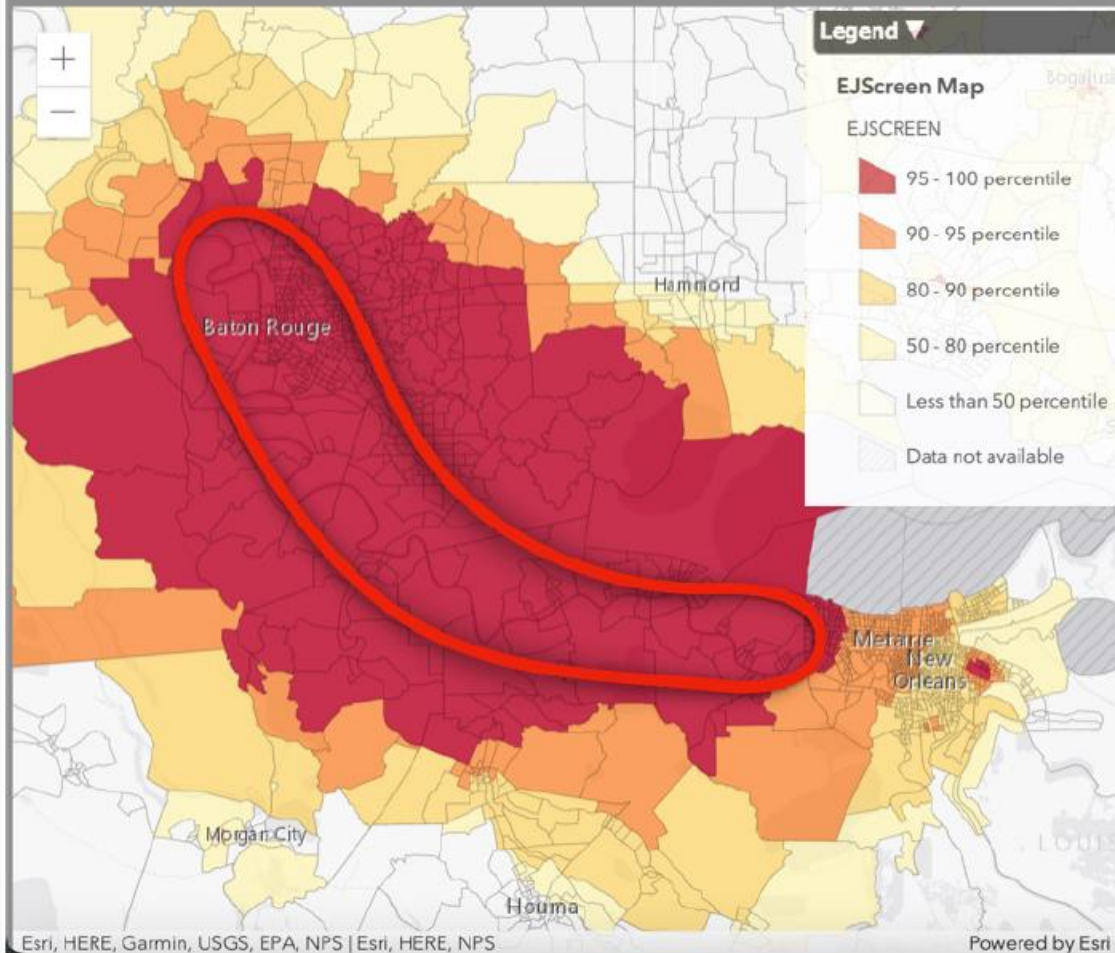
LOUISIANA IS AN INDUSTRIAL HUB FOR THE NATION AND THE GLOBE. MANY RESIDENTS RESIDE AMONGST A VARIETY OF POTENTIALLY HAZARDOUS POLLUTION SOURCES INCLUDING TRANSPORTATION INFRASTRUCTURE (MARINE, RAIL AND ROAD) AS WELL AS HUNDREDS OF MAJOR INDUSTRIAL SOURCES (POWER GENERATION, PETROLEUM REFINING, BULK IMPORT/EXPORT, CHEMICAL AND PLASTIC MANUFACTURING). THIS IS PARTICULARLY TRUE OF COMMUNITIES WITHIN THE RIVER PARISHES ALONG THE MISSISSIPPI RIVER IN SOUTH LOUISIANA WHERE THERE HAS BEEN A LONG HISTORY OF COMMUNITY CONCERNS OVER AIR POLLUTION, FUMES, ODORS AND ACCIDENTS.

In 2023, LEAN received support from the United States Environmental Protection Agency (EPA) through EPA-OAR-OAQPS-22-01: Enhanced Air Quality Monitoring for Communities, to develop the Louisiana Community Air Monitoring Network. This project aims to expand air quality data and air quality literacy, particularly in the parishes bordering the Mississippi River, between Baton Rouge and New Orleans, Louisiana's two largest cities.

LEAN is working to achieve this effort by collecting extensive, high resolution air quality data across the region while coordinating with diverse stakeholders to review this data and identify collaborative opportunities for air quality improvements.



Toxic Releases to Air (toxicity-weighted concentration)



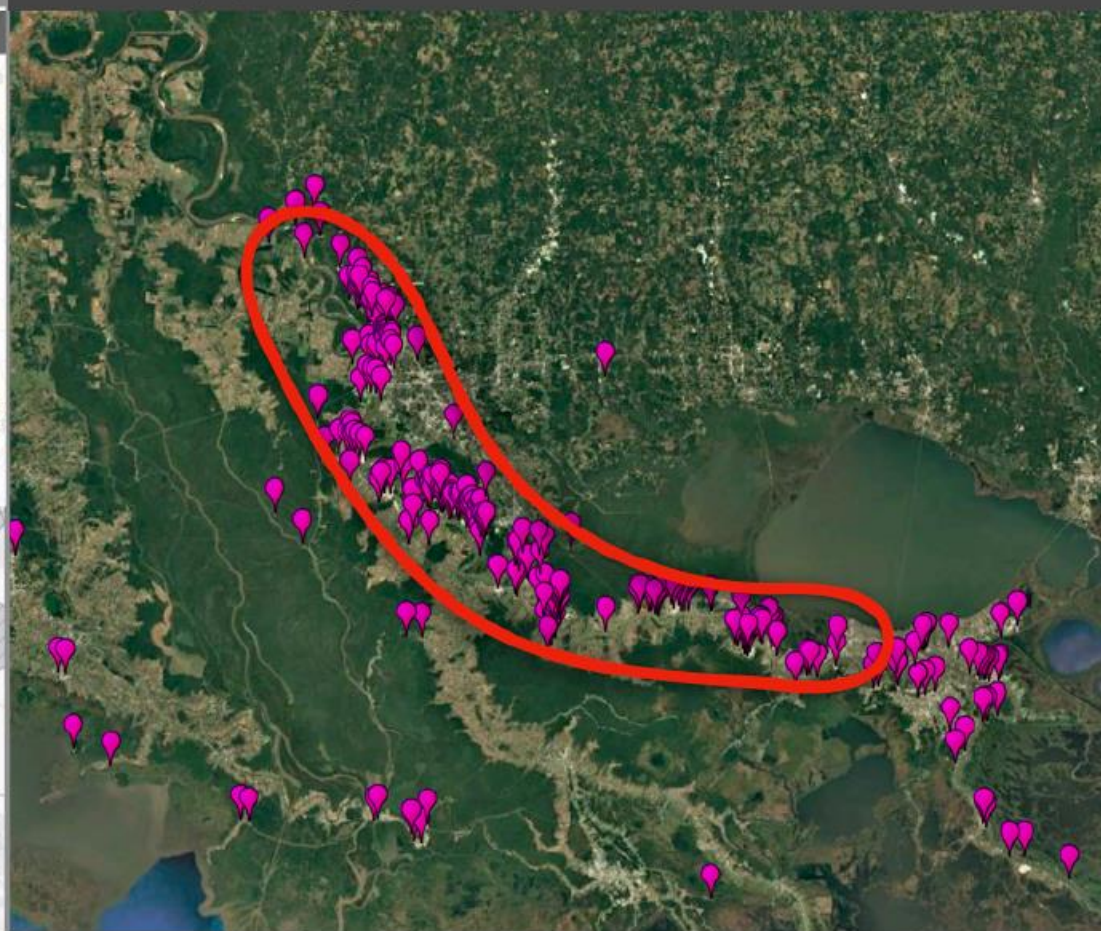
Esri, HERE, Garmin, USGS, EPA, NPS | Esri, HERE, NPS

Powered by Esri

The program area exists with the 95th percentile of Toxic Releases to Air.

Toxic Release Inventory (TRI) reporting facilities in the program area

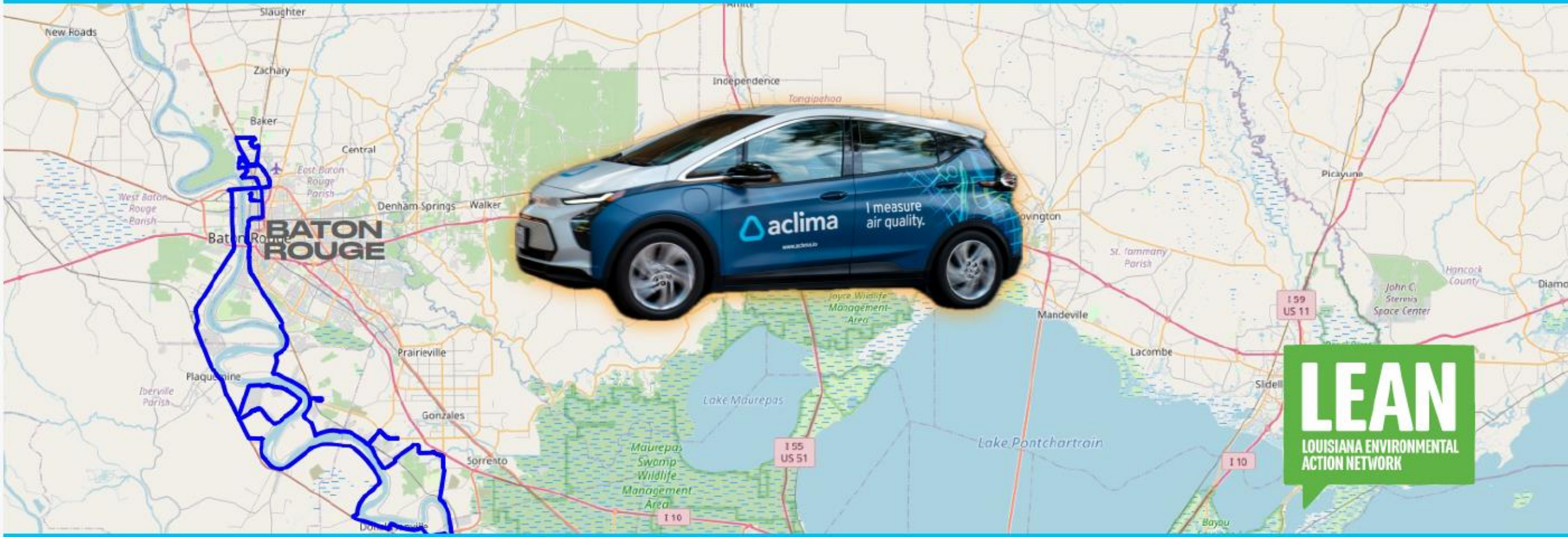
For illustrative purposes only



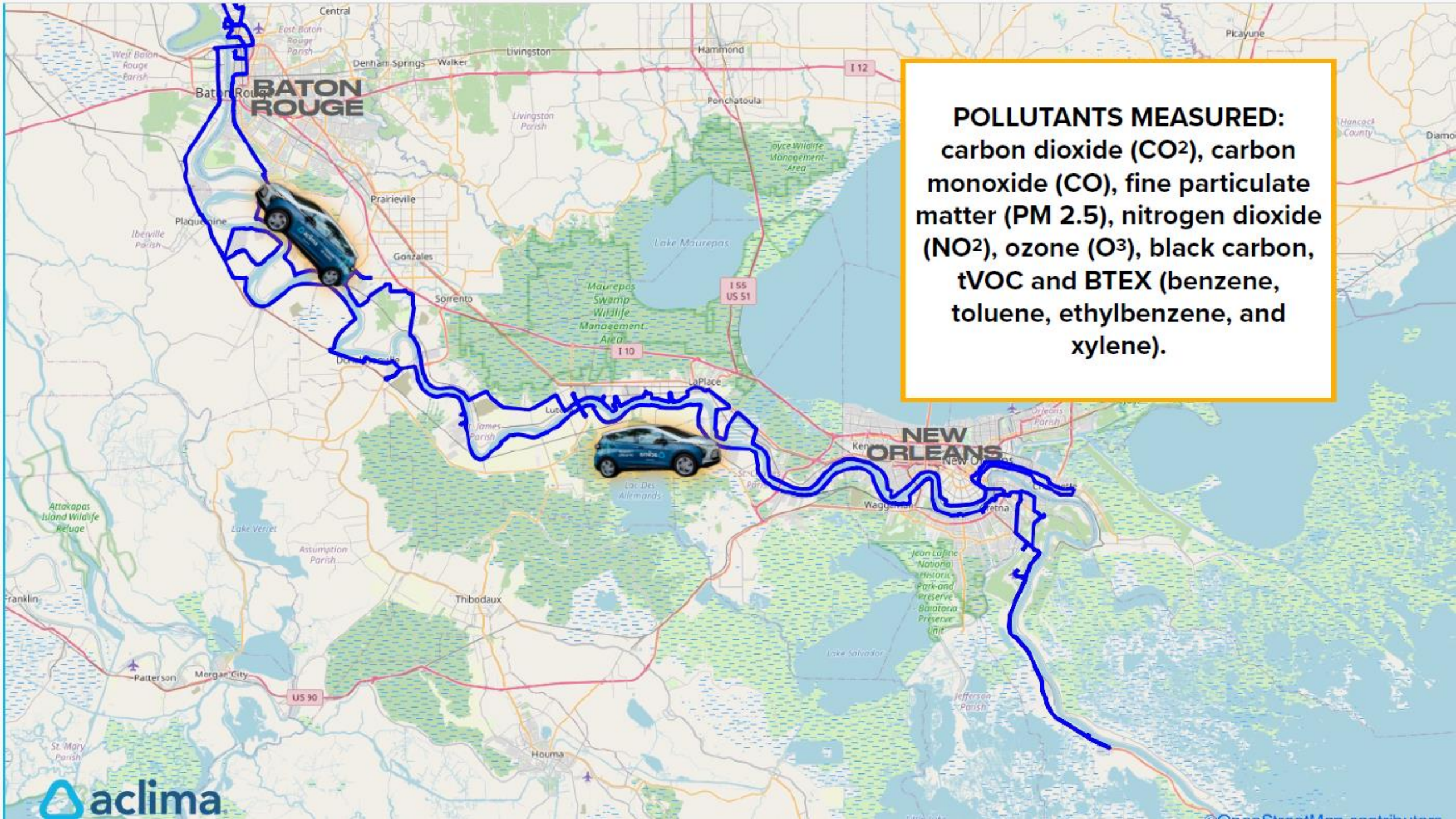
Priority communities exist adjacent to a high number of major point sources of air pollution.

PHASE ONE - HYPER LOCAL, REGION WIDE MONITORING

On December 2023 through March 2024, a fleet of mobile air quality monitoring vehicles operated by technology company Aclima, collected air quality data. The monitoring route extended approx. 300 linear miles along the East and West bank of the Mississippi River passing through Baton Rouge, New Orleans and dozens of communities in between.



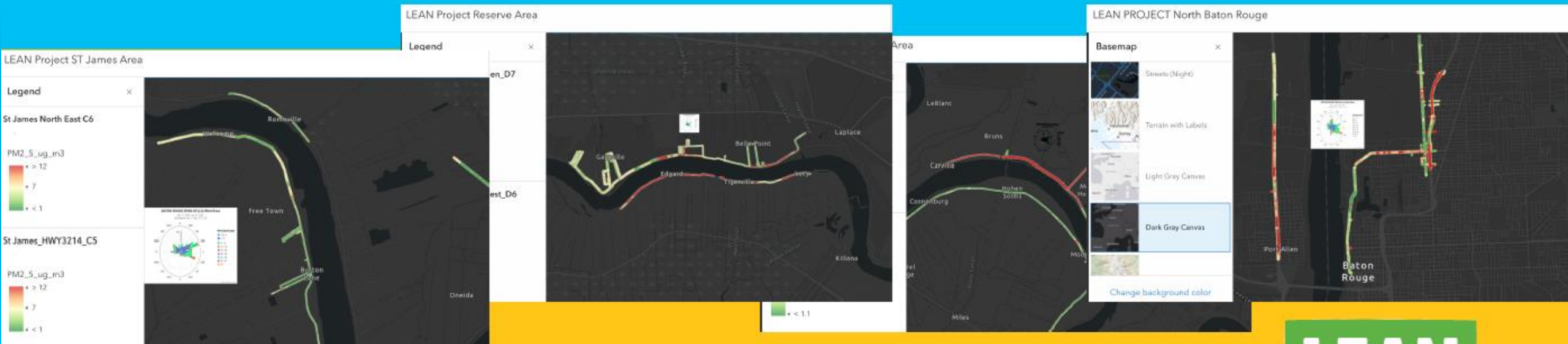
POLLUTANTS MEASURED:
carbon dioxide (CO₂), carbon monoxide (CO), fine particulate matter (PM 2.5), nitrogen dioxide (NO₂), ozone (O₃), black carbon, tVOC and BTEX (benzene, toluene, ethylbenzene, and xylene).



RESULTS, TRANSPARENCY AND COMMUNICATION

The mobile monitoring fleet collected data every second during the collection months resulting on approximately **50 million data points**. Weekly data files from this collection effort were published to LEANs website while the collection was underway, for anyone to use and independently analyze.

Technical Advisor, Dr Slawo Lomnicki, produced community specific maps of air quality data for interested communities to understand and engage with the results as they were being collected.



LEAN is committed to full transparency and open communication and is providing information produced by this project to all interested parties with the goal of addressing air quality concerns, protecting public health and our environment. All data and resources produced by this project can be found here: <https://leanweb.org/about/projects/community-air-monitoring-network>



In August of 2024, air quality contractor Aclima completed their region wide analysis of the mobile monitoring effort and identified 29 'hotspots' showing consistently elevated levels of air pollution within the program area.

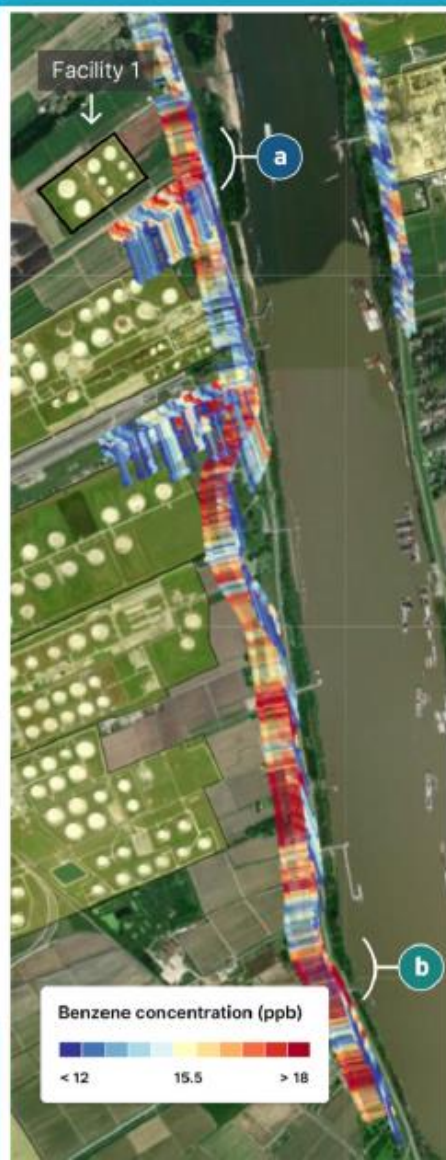


Hyperlocal ambient air pollution mapping Louisiana Industrial Corridor



August 12, 2024

This document contains descriptions of intellectual property, methodologies, and inventions covered by U.S. and international patents, or patents pending that are the exclusive property of Aclima Inc.



PHASE 2: STATIONARY MONITORING

With the guidance of community concerns and region-wide air monitoring data, Phase 2 of LEAN's Community Air Monitoring Project is establishing stationary air monitoring sites within participating communities to further track identified concerns and potential air quality improvements.

Currently participating organizations and stationary monitoring sites hosts include:



Alsen Community Village in Alsen, LA
Citizens for a Better St Gabriel in St Gabriel, LA
Rural Roots LA in Donaldsonville, LA
Mt Triumph Baptist Church in St James, LA
First Pilgrim Calvary Missionary Baptist Church in Geismar, LA



LEAN
LOUISIANA ENVIRONMENTAL
ACTION NETWORK



THANK YOU

QUESTIONS?

SEND AN EMAIL TO:
CONTACT@LEANWEB.ORG



**Email:
R6EJ@epa.gov**

Weekly EJ Updates



<https://www.epa.gov/tx/stronger-engagement-results-and-justice-region-6>